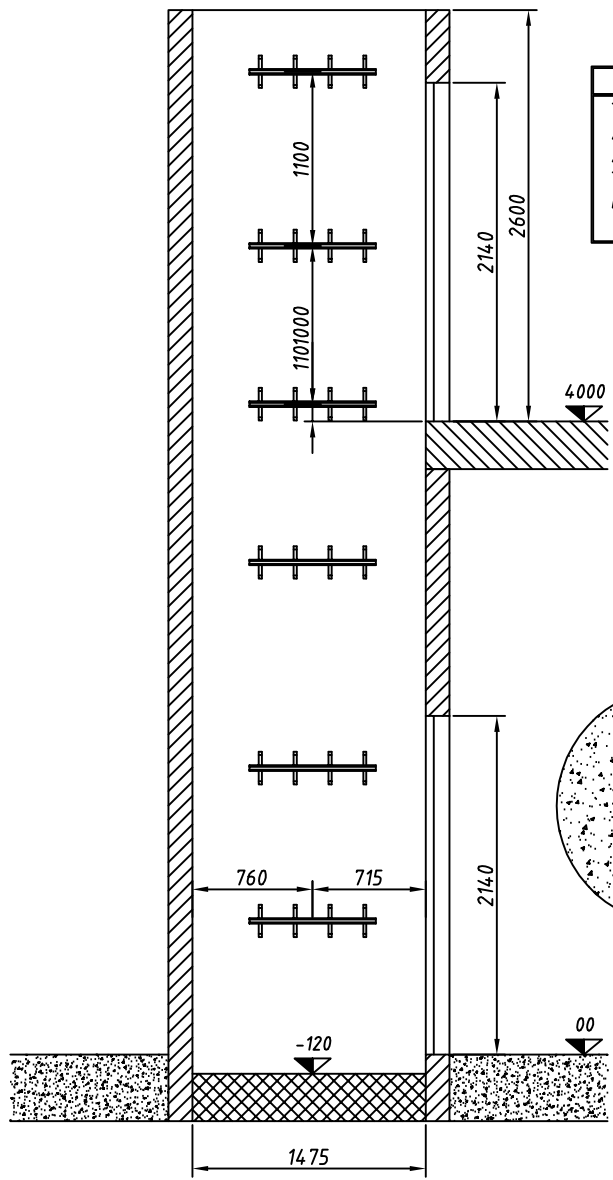


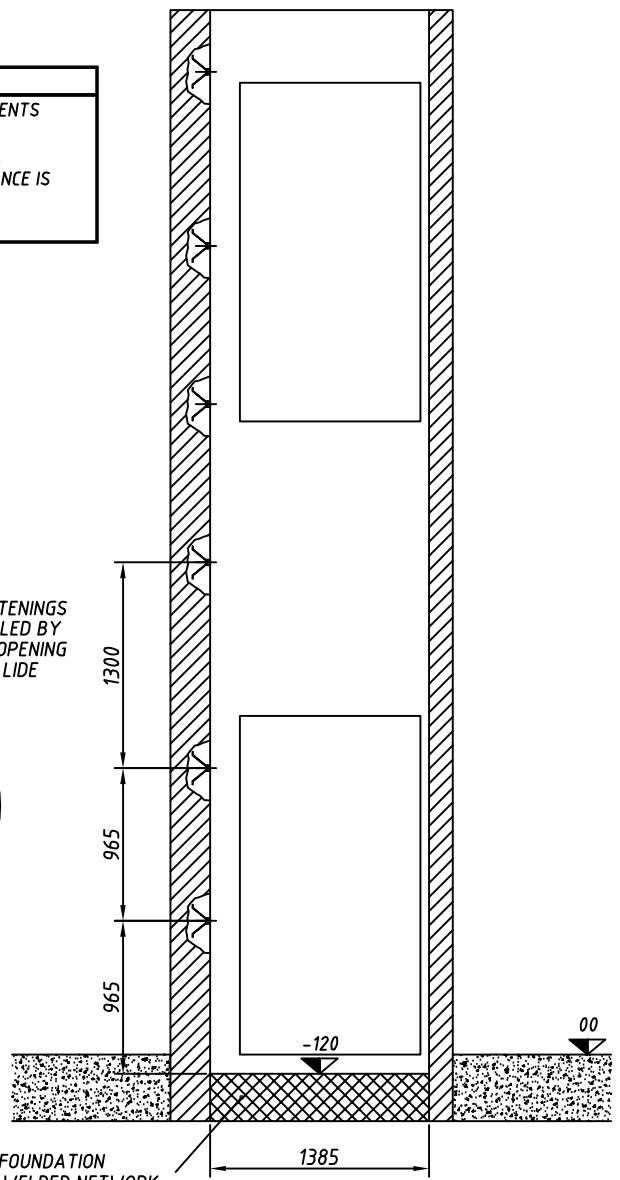
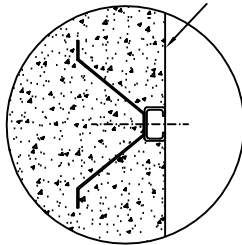
SEZ. A-A

SEZ. B-B

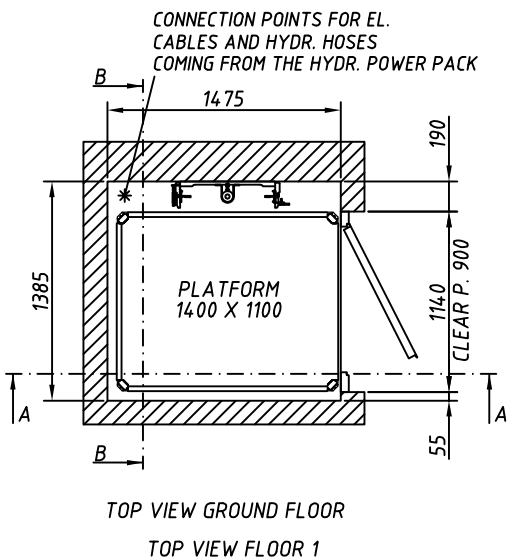


**WARNING**  
 THE SHAFT MEASUREMENTS  
 AND DOORS POSITION  
 ARE VERY IMPORTANT.  
 THE ADMITTED TOLERANCE IS  
 IS 5 mm ONLY.

THE RAIL FASTENINGS  
 MUST BE WALLED BY  
 KEEPING THE OPENING  
 ON THE WALL LIDE



CONCRETE FOUNDATION  
 WITH ELECTRIC-WELDED NETWORK



ORDER : 146748  
 CUSTOMER : ORTO PLUS LIFTS KACZMARCZYK HU  
 FINAL USER :  
 RIF. : -  
 MODEL : E07

DATA RICEZIONE DISEGNO \_\_\_\_\_  
 STAMP AND SIGNATURE FOR ACCEPTANCE  
 \_\_\_\_\_

- BUILD WALL ENCLOSURE WITH INTERNAL FREE DIMENSIONS  
 THE WALL MUST BE PERFECTLY IN SQUARE AND VERTICAL;  
 THE DOOR OPENINGS TO BE ROUGH AND THE FINISHING AFTER THE DOORS INSTALLATION.
- THE RAIL FASTENINGS TO BE CAREFULL WALLED AT THE GIVEN DISTANCES  
 AND PERFECTLY VERTICAL.
- THE REVEAL MUST BE LEFT UNFINISHED.  
 THE FINISHING TO BE MADE AFTER HAVING WALLED THE DOORS.
- SET RACEWAYS  $\phi 32$  mm. DIAM. FOR THE LOCK EL. CABLES.  
 THEY MUST CONNECT DOOR FOOTING LOCK SIDE WITH HYDRAULIC HOSES AND  
 EL. CABLES ASSEMBLY AREA.
- ATTENTION: BEFORE INSTALLING, CHECHE THE POSSIBILIT OF INSERTING THE CYLINDER  
 IN THE WALLED TRAVEL OPENING..... CYLINDER= 2800 mm
- SHAFT DOOR TO BE BUILT SO AS THE WALLS ADJACENT TO THE PLATFORM  
 HAVE NOT OUTRIGGERS AND REENTRANCES OVER 2 mm.
- POSITION TWO BEAMS AS INDICATED IN THE DRAWING  
 CALCULATE THE KIND OF BEAM AND THE ANCORAGE AS PER THE  
 ENCLOSED LOADING DIAGRAM

DATA DI EMISSIONE \_\_\_\_\_ FIRMA \_\_\_\_\_

**VIMEC**  
 Easy moving